

Whitehouse Road Farm



Property Features

Fronting one of the most scenic and historic roads in the Red Hills region of North Florida, the 236+/- acre Whitehouse Road Farm is a property that will appeal to those who value natural beauty, diversity, and privacy. Owned by the same family for almost 70 years, the first land management rule laid down by its matriarch, Mrs. Ruby Nell Harris Strang, was that no trees would be cut. Today, the pristine mixed pine and hardwood forests blend beautifully with productive hay fields spread over the property's gentle rolling topography. It's a perfect place for a retreat, homestead, or hobby farm and getting there is easy. Located just 15 miles from Tallahassee and the charming town of Monticello, Whitehouse Road Farm offers a respite from the modern world but within easy reach of its amenities.

Wildlife and Recreation

Whitehouse Road Farm can be utilized for many recreational activities including fishing, hunting, and horseback riding, among others. The 7-acre picturesque spring-fed pond is the property's most prominent feature and is known for producing sizable largemouth bass. Surrounding it is a varied landscape that provides excellent habitat for attracting a sundry of wildlife, particularly white-tailed deer and wild turkey. It's also important to note that the quantity and quality of wildlife found on a given property are influenced by neighboring landowners. That's a particular benefit for Whitehouse Road Farm due to its location across the road from El Destino Plantation where its 4,138 acres are managed at a high level to support a wild bobwhite quail population. Deer and turkey also thrive there and are often seen migrating to Whitehouse Road Farm.

At a Glance:

Acreage:
236 +/- acres

Asking Price:
~~\$6,000 per acre~~
\$4,995 per acre



Location:

Jefferson & Leon County, Florida

Special Attributes:

- Adjoins 4,138-acre Plantation
- 7-acre Spring-fed Pond
- Old Growth Forest
- Abundant Wildlife
- Productive Hay Fields
- Rolling Topography
- 15 Miles to Tallahassee & Monticello

Arnie Rogers, Licensed Real Estate Broker

Verdura Realty, LLC • 227 East 6th Avenue • Tallahassee, FL 32303

Cell: 850.491.3288 • Email: arogers@verduraproperties.com

www.VerduraProperties.com



Please note that while all information is believed to be reliable, none is guaranteed.

Whitehouse Road Farm

Wildlife and Recreation *continued*

Beyond the property's boundaries, there are still more recreational outlets located just minutes away. The 1,782-acre L. Kirk Edwards Wildlife and Environmental Area offers fishing, hunting, wildlife viewing, paddling, hiking, and biking opportunities. There's also the 755-acre St. Marks Headwaters Greenway which contains bottomland forests, freshwater marshes, and sinks. Popular activities there include horseback riding, biking, hiking and running.

History

Whitehouse Road Farm lies in an area steeped in history with archaeological evidence that traces the presence of Indians back 10,000 years. The Apalachee Indians came much later but more is known about them and their encounters with explorers Cabeza de Vaca and Hernando de Soto during those Spaniard's travels in the Red Hills area in 1523 and 1539, respectively.

Moving forward in time three centuries, white settlers began arriving and several large plantations were established in the 1830's. One of those plantations was owned by Green Hill Chaires for whom the nearby community of Chaires was named. The town of Lloyd, also located a few miles away, owed its prosperity to the railroad boom. Built in 1858, the depot there is one of only three Civil War railroads still in existence and the oldest surviving brick station in Florida. Today, you can still see homes in Lloyd that were built between 1855 and 1920.

At a Glance:

Acreage:
236 +/- acres

Asking Price:
~~\$6,000 per acre~~
\$4,995 per acre

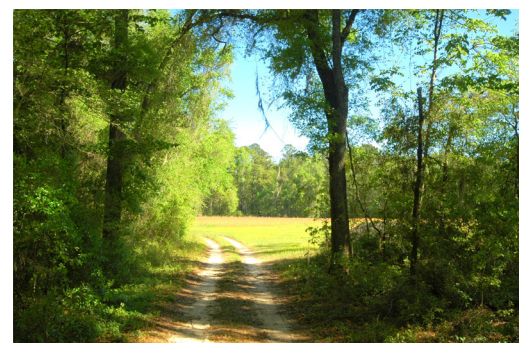


Location:

Jefferson & Leon County, Florida

Special Attributes:

- Adjoins 4,138-acre Plantation
- 7-acre Spring-fed Pond
- Old Growth Forest
- Abundant Wildlife
- Productive Hay Fields
- Rolling Topography
- 15 Miles to Tallahassee & Monticello



Arnie Rogers, Licensed Real Estate Broker

Verdura Realty, LLC • 227 East 6th Avenue • Tallahassee, FL 32303

Cell: 850.491.3288 • Email: arogers@verduraproperties.com

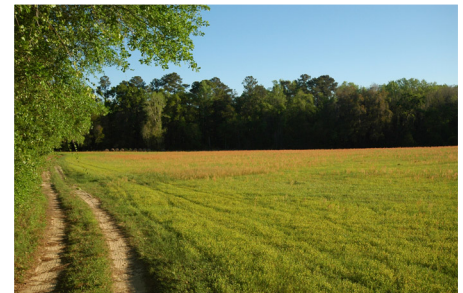
www.VerduraProperties.com



Please note that while all information is believed to be reliable, none is guaranteed.

Whitehouse Road Farm

Land Photos



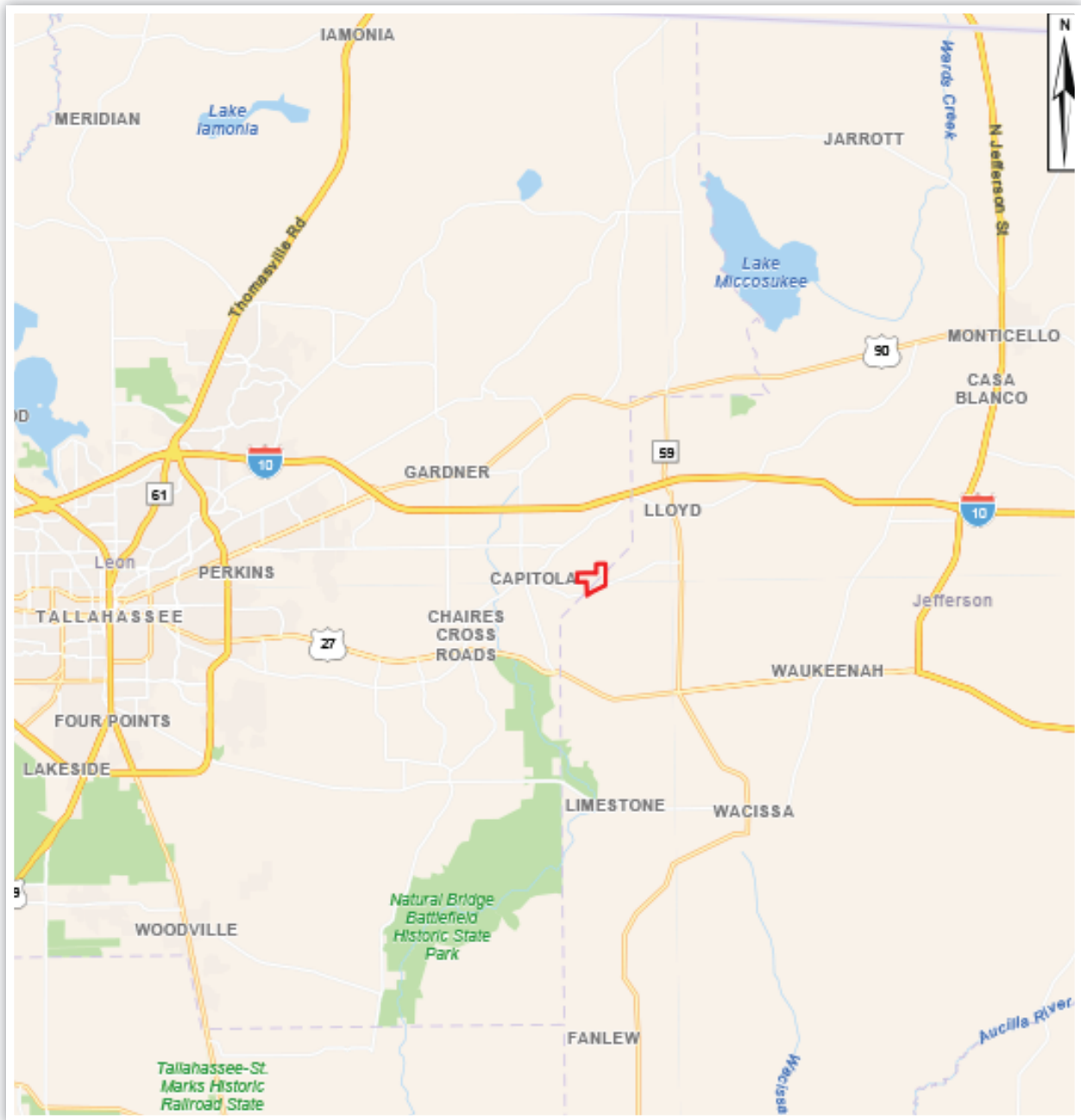
Arnie Rogers, Licensed Real Estate Broker
Verdura Realty, LLC • 227 East 6th Avenue • Tallahassee, FL 32303
Cell: 850.491.3288 • Email: arogers@verduraproperties.com
www.VerduraProperties.com



Please note that while all information is believed to be reliable, none is guaranteed.

Whitehouse Road Farm

Location Map



Arnie Rogers, Licensed Real Estate Broker
Verdura Realty, LLC • 227 East 6th Avenue • Tallahassee, FL 32303
Cell: 850.491.3288 • Email: arogers@verduraproperties.com
www.VerduraProperties.com



Please note that while all information is believed to be reliable, none is guaranteed.

Whitehouse Road Farm

Aerial Map



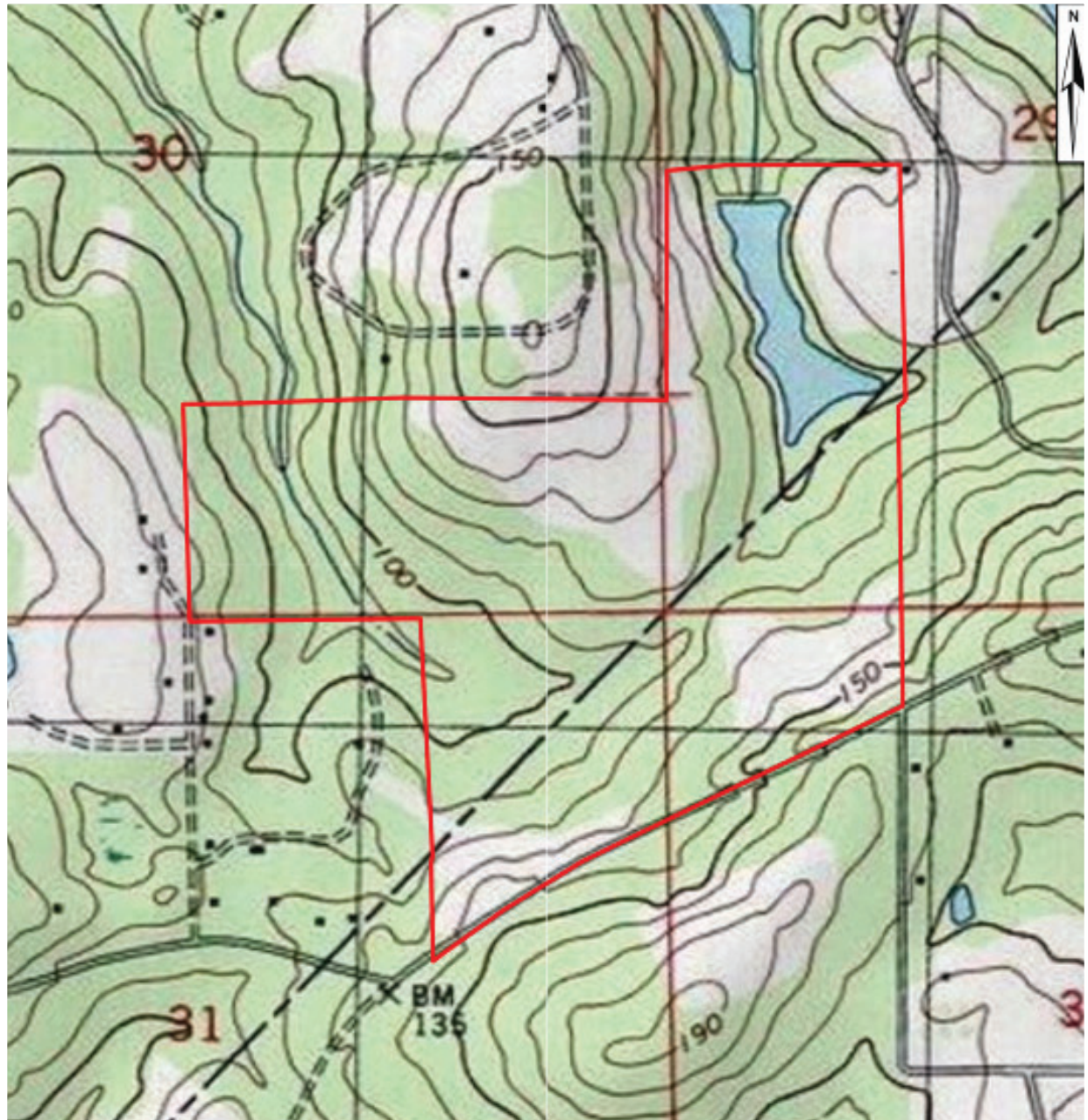
Arnie Rogers, Licensed Real Estate Broker
Verdura Realty, LLC • 227 East 6th Avenue • Tallahassee, FL 32303
Cell: 850.491.3288 • Email: arogers@verduraproperties.com
www.VerduraProperties.com



Please note that while all information is believed to be reliable, none is guaranteed.

Whitehouse Road Farm

Topo Map



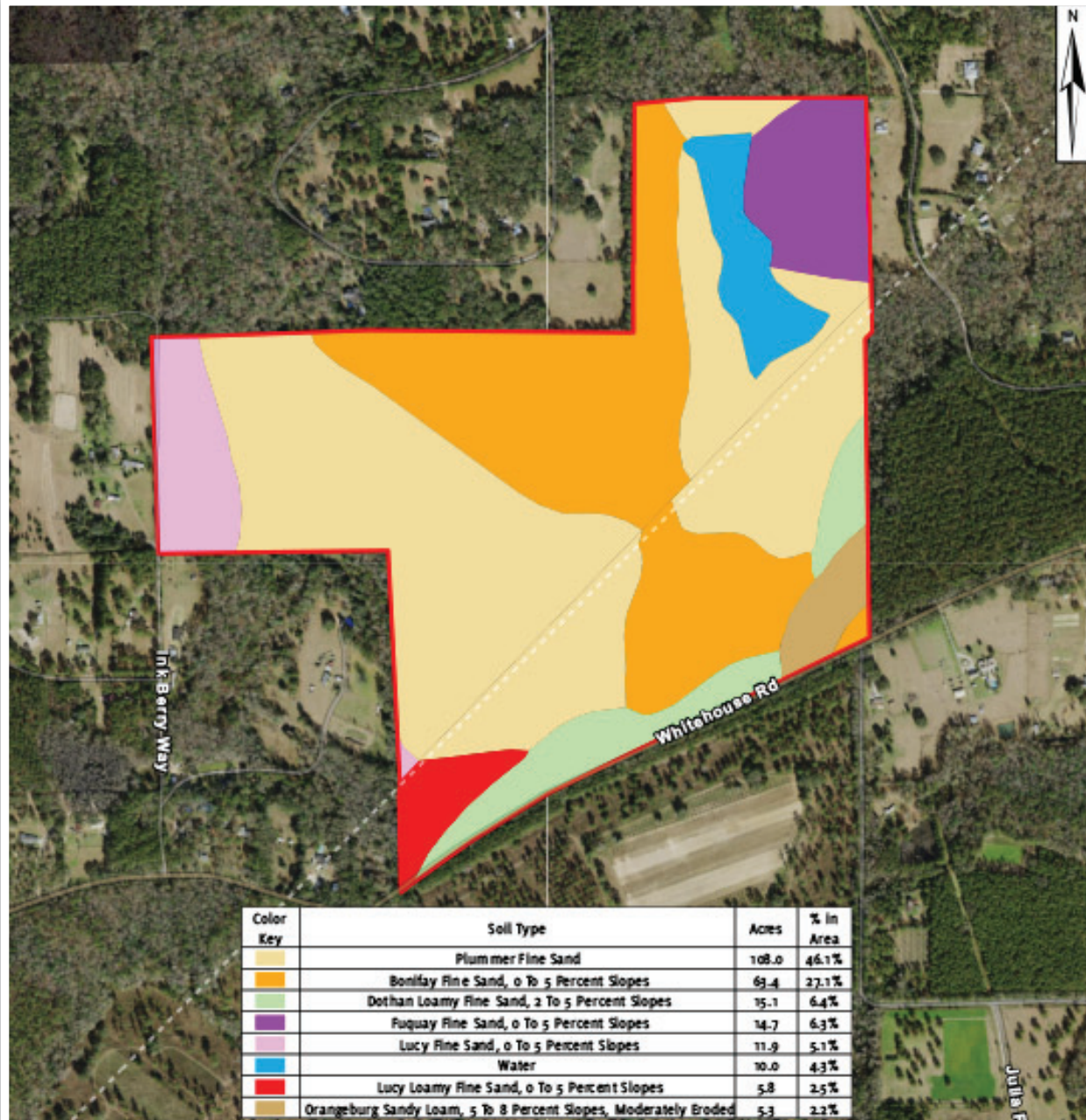
Arnie Rogers, Licensed Real Estate Broker
Verdura Realty, LLC • 227 East 6th Avenue • Tallahassee, FL 32303
Cell: 850.491.3288 • Email: arogers@verduraproperties.com
www.VerduraProperties.com



Please note that while all information is believed to be reliable, none is guaranteed.

Whitehouse Road Farm

Soils Map



Arnie Rogers, Licensed Real Estate Broker
 Verdura Realty, LLC • 227 East 6th Avenue • Tallahassee, FL 32303
 Cell: 850.491.3288 • Email: arogers@verduraproperties.com
www.VerduraProperties.com



Please note that while all information is believed to be reliable, none is guaranteed.