

Turkey Creek

Property Features

Strategically positioned squarely in the midst of Florida Panhandle's woodbasket in Liberty County, Florida, Turkey Creek provides an excellent opportunity for a long term timberland investor. As evidenced by the pricing, the owner has a high level of motivation to sell.

Perhaps what differentiates Turkey Creek from many other Liberty County properties is the amount of land available for productive plantations - in fact, 66% of the tract is plantable. With the exception of 117 acres of 2004 slash, the pine plantations were clear cut in 2010 and 2011.

Recreational opportunities are plentiful due in large part to the property having miles of frontage on Telogia and Turkey Creek as well as its adjacency to other large land owners. One of these owners is The Nature Conservancy's 6,295-acre Apalachicola Bluffs and Ravines Preserve. This preserve protects two of the world's rarest evergreens, the Florida torrey and Florida yew, in addition to numerous other native trees, flowers, and grasses. Turkey Creek's location near the 633,000-acre Apalachicola National Forest (*Florida's largest national forest*) is also a significant asset.

At a Glance

Acreage:

1,263 Acres

Asking Price:

\$795 per acre

Location:

East of Bristol in Liberty County, Florida (*30 minutes to Tallahassee*)

Special Attributes:

- Aggressively priced
- Located within Florida's woodbasket
- Miles of frontage on Telogia and Turkey Creek
- Surrounded by large landowners

[Click here to download maps and information](#)

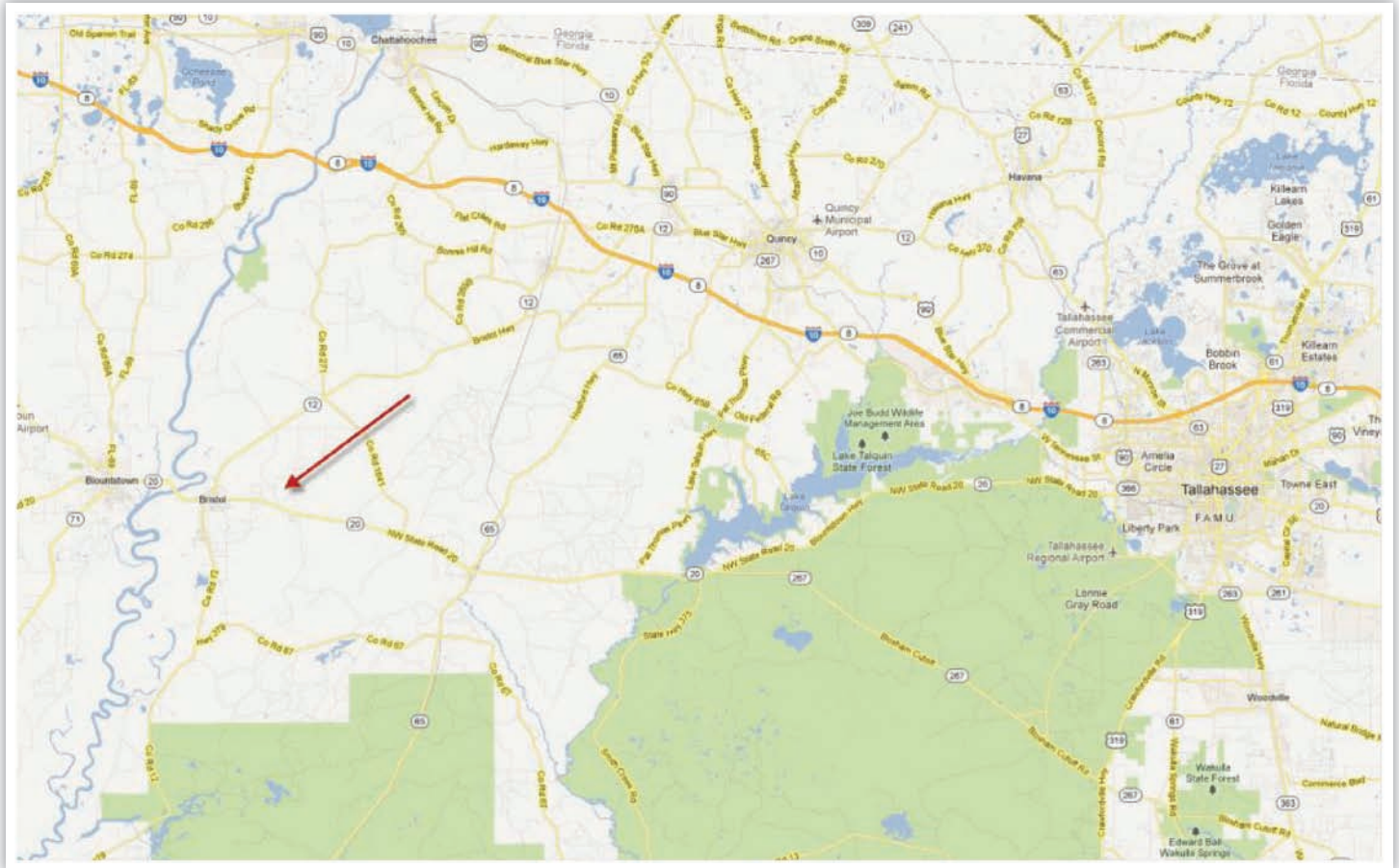


Arnie Rogers, *Licensed Real Estate Broker*
Verdura Realty, LLC • 2065 Thomasville Road • Tallahassee, FL 32308
Cell: 850.491.3288 • Email: arogers@verduraproperties.com
www.VerduraProperties.com



Turkey Creek

Location Map - Regional



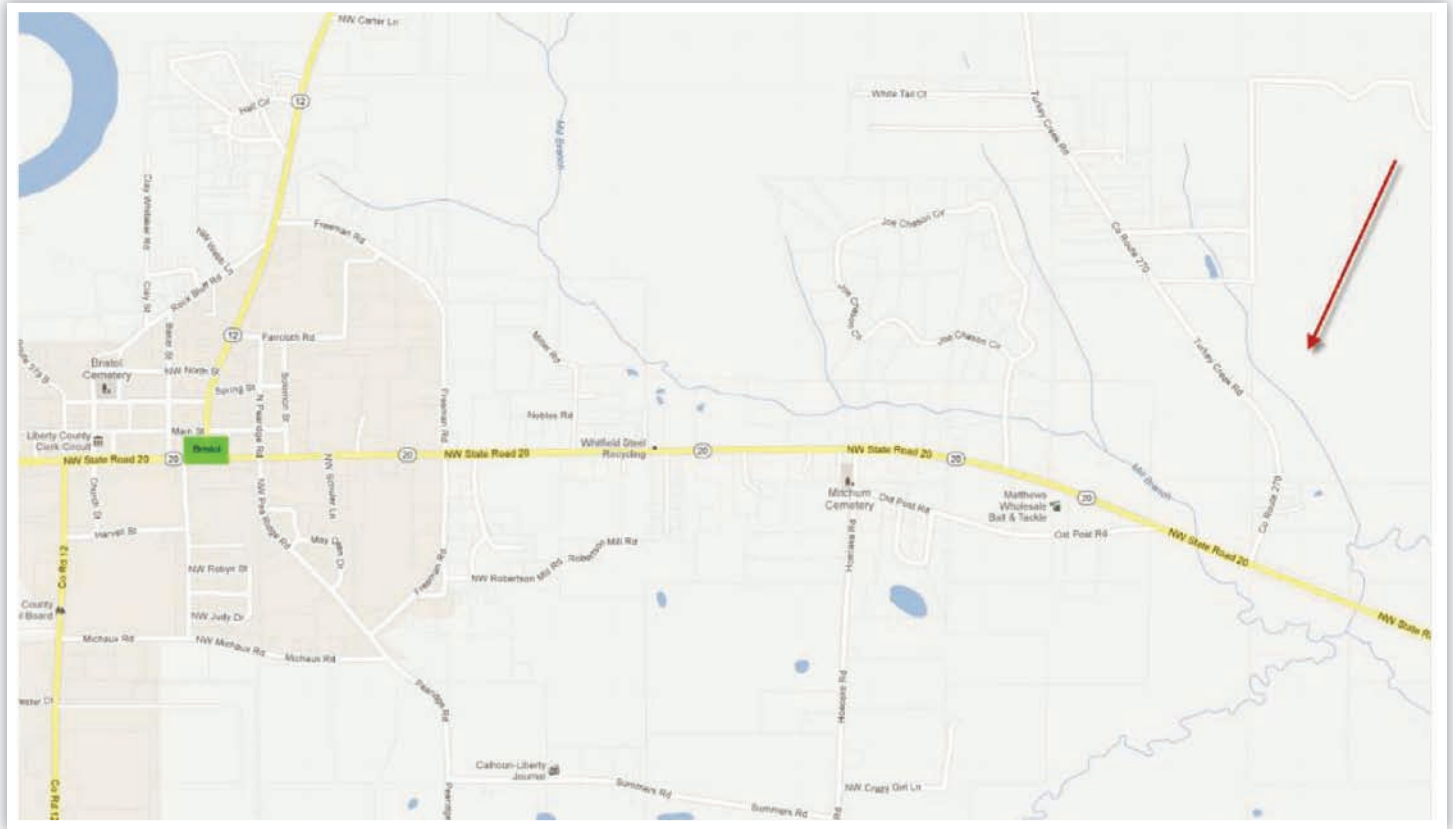
Arnie Rogers, Licensed Real Estate Broker
Verdura Realty, LLC • 2065 Thomasville Road • Tallahassee, FL 32308
Cell: 850.491.3288 • Email: arogers@verduraproperties.com
www.VerduraProperties.com



Please note that while all information is believed to be reliable, none is guaranteed.

Turkey Creek

Location Map - Local



Arnie Rogers, Licensed Real Estate Broker
Verdura Realty, LLC • 2065 Thomasville Road • Tallahassee, FL 32308
Cell: 850.491.3288 • Email: arogers@verduraproperties.com
www.VerduraProperties.com



Please note that while all information is believed to be reliable, none is guaranteed.

Turkey Creek

Aerial Map



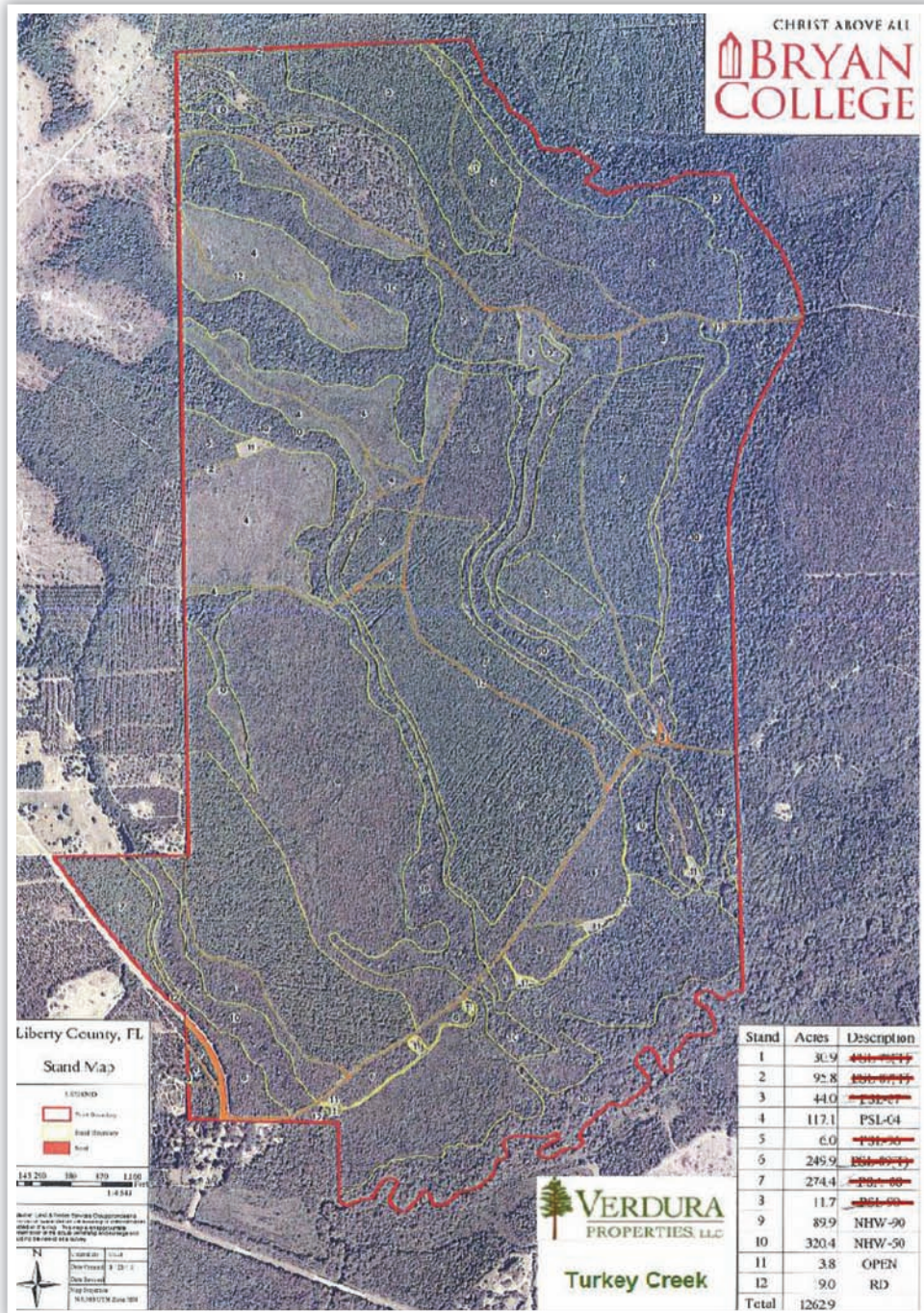
Arnie Rogers, Licensed Real Estate Broker
Verdura Realty, LLC • 2065 Thomasville Road • Tallahassee, FL 32308
Cell: 850.491.3288 • Email: arogers@verduraproperties.com
www.VerduraProperties.com



Please note that while all information is believed to be reliable, none is guaranteed.

Turkey Creek

Timber Map



Arnie Rogers, Licensed Real Estate Broker
 Verdura Realty, LLC • 2065 Thomasville Road • Tallahassee, FL 32308
 Cell: 850.491.3288 • Email: arogers@verduraproperties.com
www.VerduraProperties.com



Please note that while all information is believed to be reliable, none is guaranteed.

Turkey Creek

Photos



Arnie Rogers, Licensed Real Estate Broker
Verdura Realty, LLC • 2065 Thomasville Road • Tallahassee, FL 32308
Cell: 850.491.3288 • Email: arogers@verduraproperties.com
www.VerduraProperties.com



Please note that while all information is believed to be reliable, none is guaranteed.